



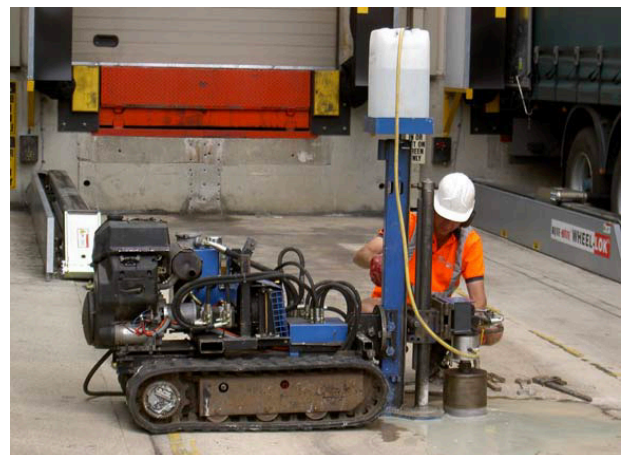
CASE STUDY

Working with Honda for over a decade

OVERVIEW

In March 1998 Honda of the UK Manufacturing Ltd asked GRM Development Solutions Ltd (then Ground Risk Management Ltd) to carry out some ground investigation works relating to a new car manufacturing plant they were planning for their site in Swindon, Wiltshire. These works included a geophysical survey and cable-percussion boreholes to assess the depth to the underlying Cornbrash Formation limestones, and the nature of the overlying deposits. This work was followed by rotary cored boreholes to assess the nature and bearing characteristics of the limestones, together with geotechnical testing. Appropriate chemical testing to assess potential risks to site workers, future endusers and the environment was also carried out. Once construction began, GRM made regular visits to the site to advise on foundation issues.

In carrying out the above works GRM formed part of an international team, lead by the Canadian construction company Vanbots and American architects/engineers SSOE Inc. The new car plant opened in 2001.



KEY FACTS

- ▶ Working with Honda since 1998
- ▶ Part of an international design team
- ▶ Over 10 different construction projects

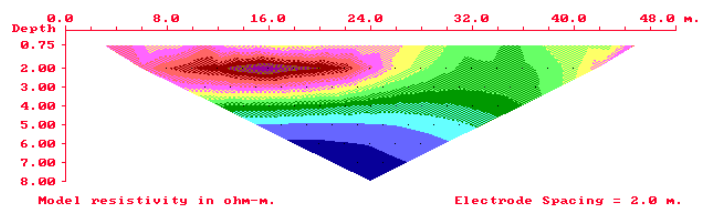
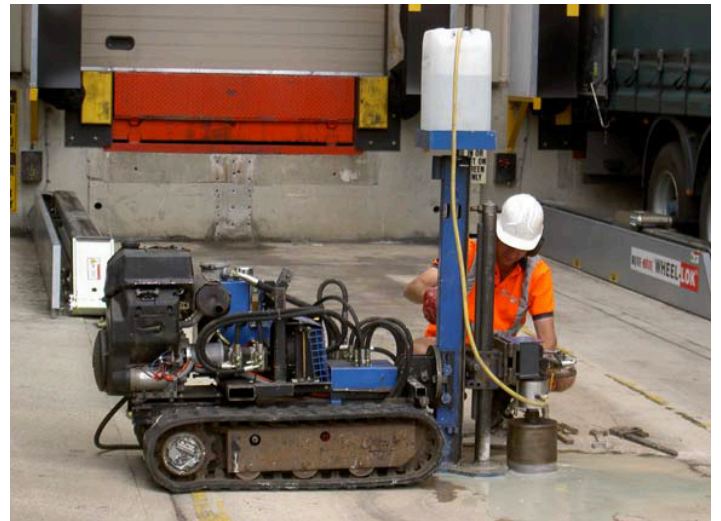
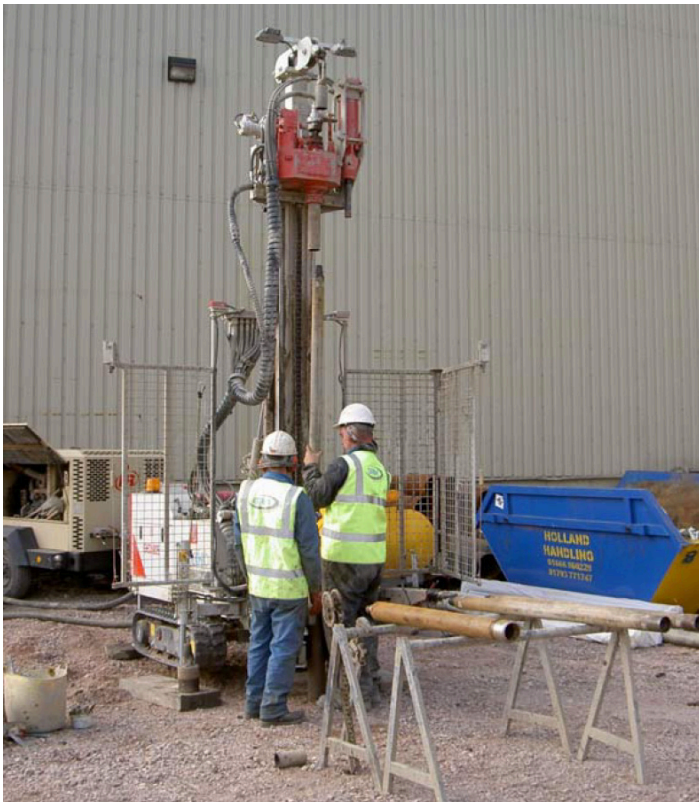
A LONG STANDING RELATIONSHIP

Just over 10 years after starting work on this project, GRM still enjoys a good working relationship with the Honda facilities team in Swindon. During this time we have carried out ground investigations for, and given advice on, over 10 different construction projects including extensions to existing factory buildings and new standalone structures.

On the basis of ground investigation work carried out, over the years, GRM has given advice and recommendations relating to appropriate foundation solutions and environmental issues (contamination testing and disposal of excess soils).

PROJECTS INCLUDE:

- Buildings imposing heavy loads on the ground, such as a new press plant and a paint shop
- Relatively light weight structures such as a delivery depot, distribution sheds, a visitor centre and extensions to loading bays
- A large warehouse



As with all its clients, GRM has been pleased to provide Honda with a prompt, cost-effective, tailored service, giving appropriate advice and solutions to the challenges set by the variable ground conditions and variety of structures proposed.

Land Appraisal | Environmental | Geotechnical | Design | Mining | Inspections

Please contact us for an informal discussion on how we can save both time and money on your development project:

www.grm-uk.com | 01283 551249 | info@grm-uk.com